

# Mech-Eye DEEP Industrial 3D Camera

For depalletizing and palletizing applications in logistics

Ultra-large FOV | High accuracy | For long-range working distance  
High performance | Competitive price | Plug & play simple setup



MTBF (Mean Time Between Failures): **≥ 40,000 hours**

## Specifications

Recommended working distance: 1200-3500 mm

Near FOV: 1200 × 1000 mm @ 1.2 m

Far FOV: 3500 × 2800 mm @ 3.5 m

Depth map resolution: 2048 × 1536

RGB resolution: 2000 × 1500

Point Z-value repeatability ( $\sigma$ )<sup>[1]</sup>: 1.0 mm @ 3.0 m

Measurement accuracy (VDI/VDE)<sup>[2]</sup>: 3.0 mm @ 3.0 m

Typical capture time: 0.5-0.9 s

Image sensor: Sony CMOS for high-end machine vision

Baseline: 300 mm

Dimensions: 366 × 77 × 92 mm

Weight: 2.4 kg

Light source: Red laser (638 nm, Class 2)

Operating temperature: -10-45°C

Communication interface: Gigabit Ethernet

Input: 24 V DC, 3.75 A

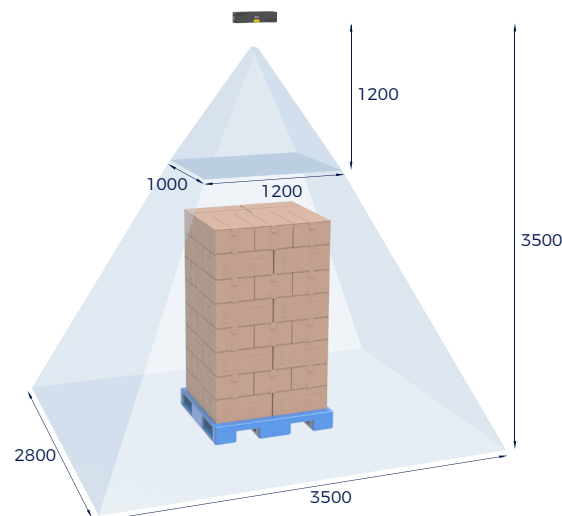
Safety and EMC: CE/FCC/VCCI/KC/ISED/NRTL

IP rating: IP65

Cooling: Passive

MTBF (Mean Time Between Failures) : **≥ 40,000 hours**

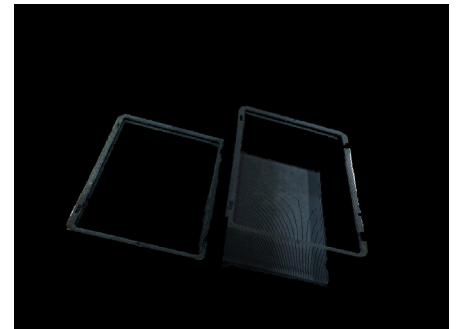
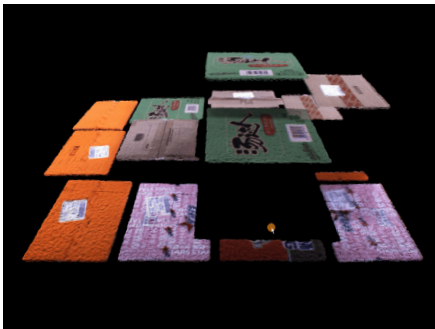
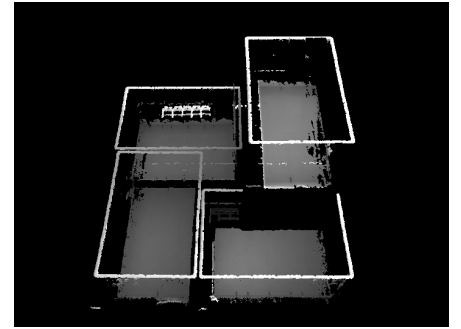
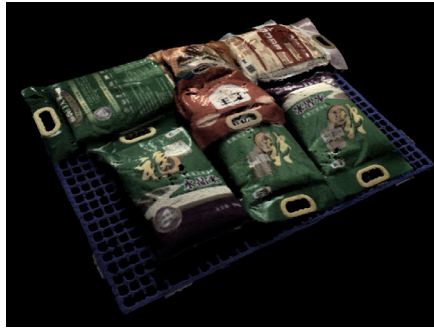
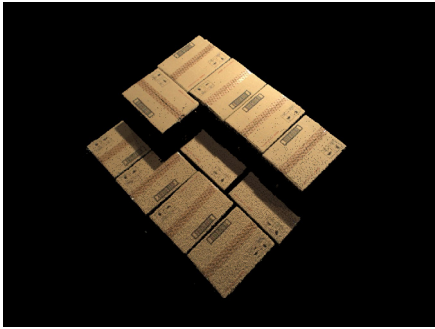
## Field of View (mm)



[1] One standard deviation of 100 Z-value measurements of the same point. The measurement target was a ceramic plate.

[2] According to VDI/VDE 2634 Part II.

## Point Clouds



Tightly-packed cartons  
with patterns and tape

Tightly-packed sacks  
with patterns

Totes

## Designed for Large FOV Logistics Applications

