



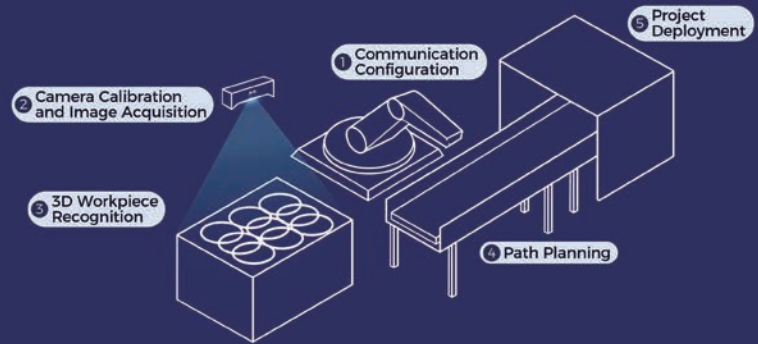
Mech-Vision Machine Vision Software

Intuitive vision software for complex vision applications

- Intuitive solution-oriented GUI
- Built-in industry-leading algorithms
- Various vision tools integrated
- Extensive solution library
- Easy setup & fast deployment

All-in-One Platform Software

The extensive Mech-Vision software manages all project steps, from configuration to deployment, in one system.



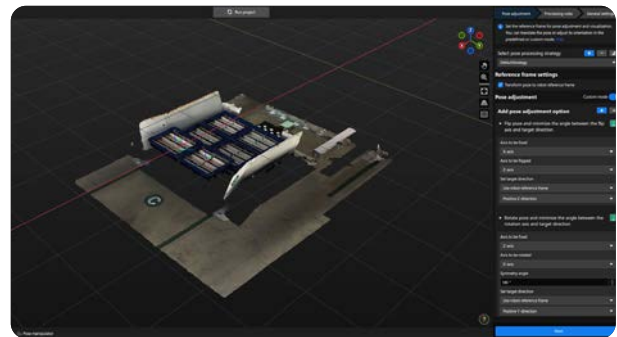
Discover the Benefits of Mech-Vision

Mech-Vision is a cutting-edge machine vision software designed to tackle the toughest vision challenges. With a solution-oriented user interface and many functional tools integrated, users and system integrators can realize easy setup and fast deployment. Driven by robust algorithms, Mech-Vision helps users solve simple and complex vision tasks, from identification and localization to measurement and inspection.



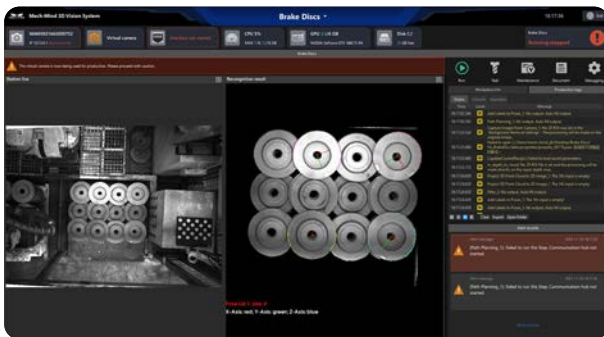
Advanced algorithms

Mech-Vision has an array of robust AI algorithms built in. Users can access recognition results in less than 1 second with 99.8% accuracy.



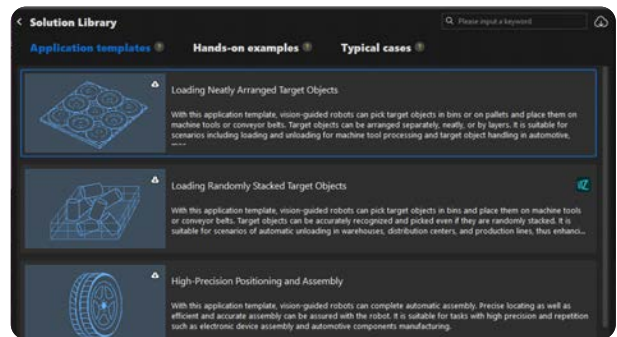
Innovative setup tools

Many tools make your setup and deployment more accurate and efficient, such as 3D workpiece recognition tool and pose adjustment tool.



Easy-to-use production interface

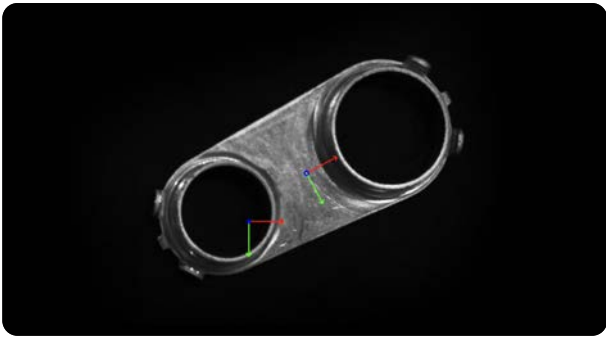
Users can set up a production interface in just two steps. The graphical production interface allows users to monitor each stage of production and check the results in real time.



Rich solution library

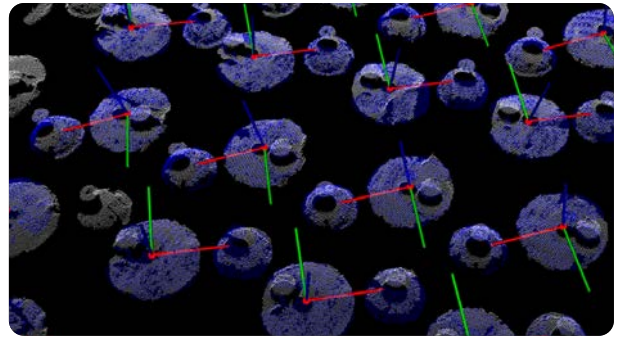
Our solution library offers proven real-world cases across various industries, providing ready-to-use resources for understanding, deploying, modifying, and maintaining applications with ease.

Robust AI Algorithms for Complex Challenges



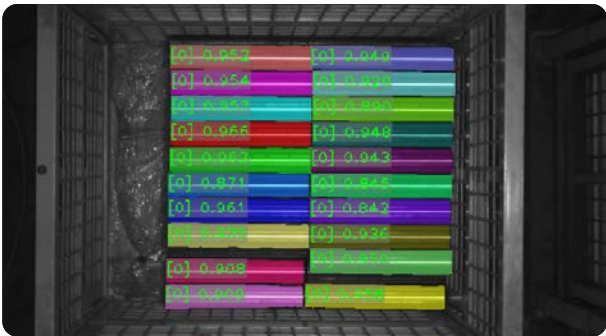
2D matching

Achieve accurate sub-pixel matching of objects, even in challenging conditions with low contrast and high noise levels.



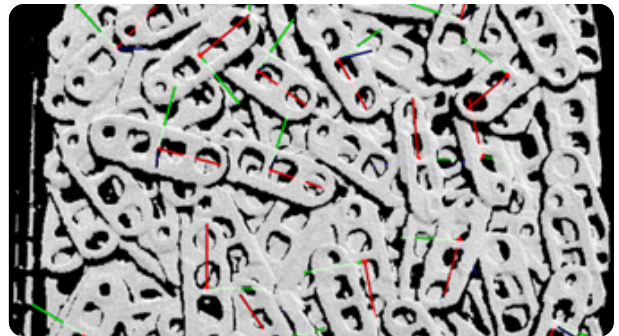
3D matching

Easily identify objects, even those with subtle features, whether they are tightly or randomly stacked, or located in hard-to-reach areas.



2D deep learning

Work with Mech-DLK to accurately recognize different kinds of items and overlapping objects, even those with intricate textures.



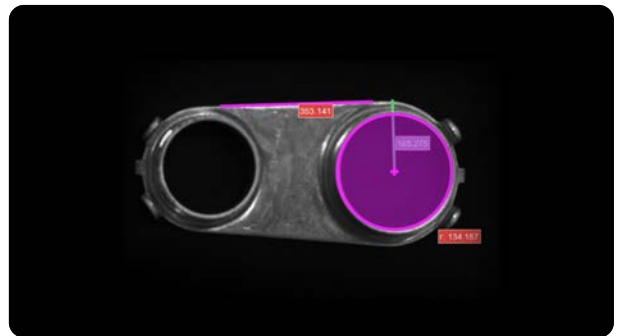
3D deep learning

Work with Mech-DLK Sim2Pick to train models without data collection and manual labeling.



Novel objects recognition

Quickly recognize and locate randomly positioned objects without data collection and training.



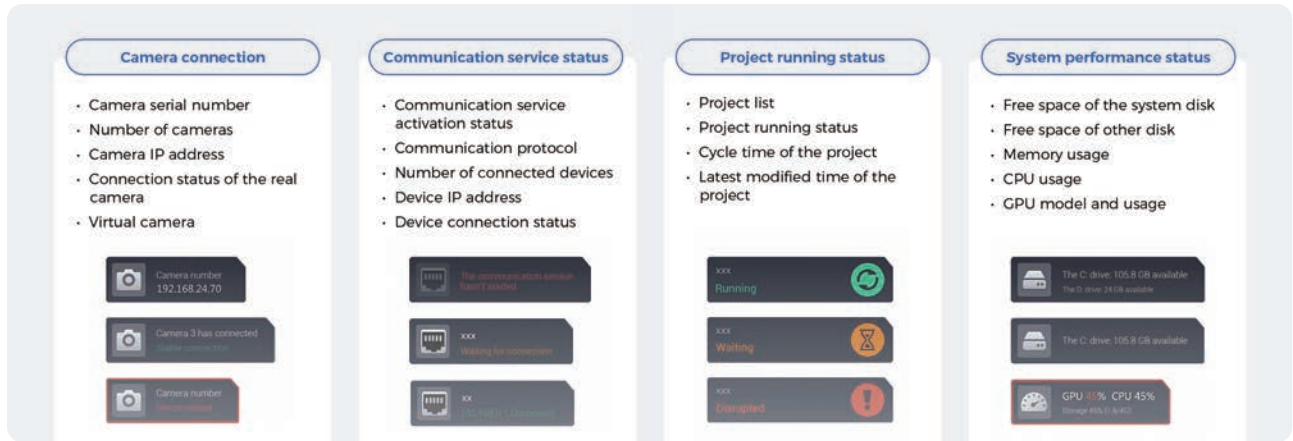
3D measurement & inspection

Meet a variety of inspection and measurement needs with built-in feature extraction tools and self-developed caliper tools.

Production Interface Optimizes Your Production

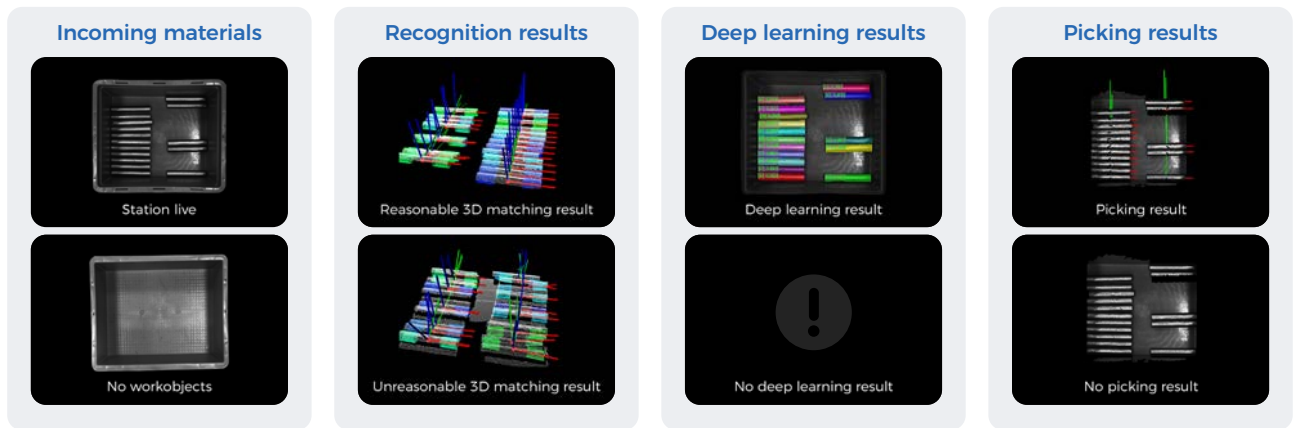
Monitor

The production status is displayed on the interface for you to accurately locate the fault. It also displays recognition results, deep learning results, and picking results for your fast check.



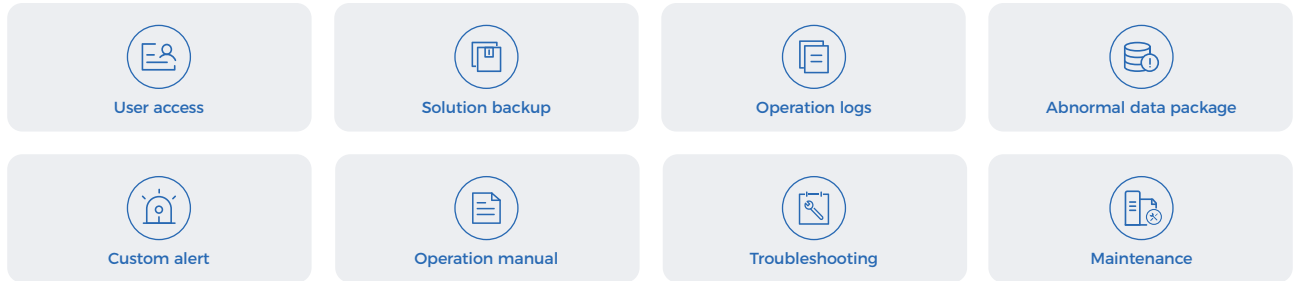
Control

Users can customize the model for workpieces of various specs and shapes, allowing for flexible adaptation to various production lines.



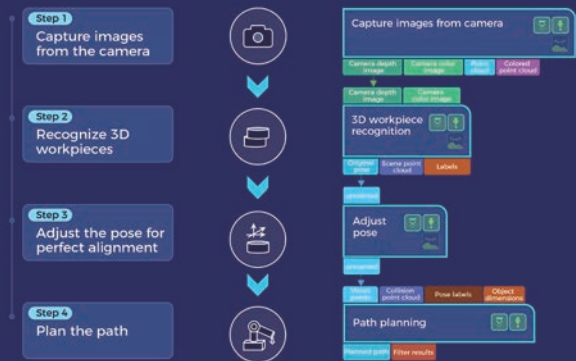
Maintenance

Production logs, alert records, and abnormal data packets are available for quick troubleshooting, improving production stability and reducing maintenance costs.



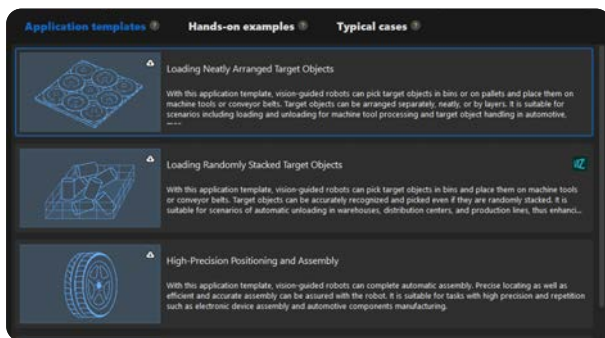
Quickly Build Your Projects with General Workpiece Picking Template

Set up your machine tending project in under 10 minutes with a simple four-step process.



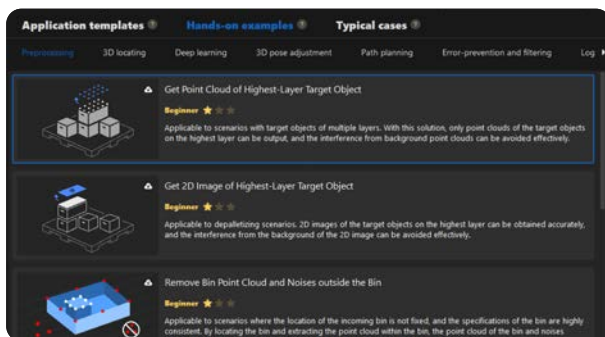
Extensive Solution Library for Faster and Easier Deployment

The new Solution Library makes it easy to browse **real-world projects and cases**. With its intuitive graphical interface and pre-installed project templates, you can effortlessly choose and optimize existing applications that best fit your needs, enabling quick and flexible deployment of your new project.



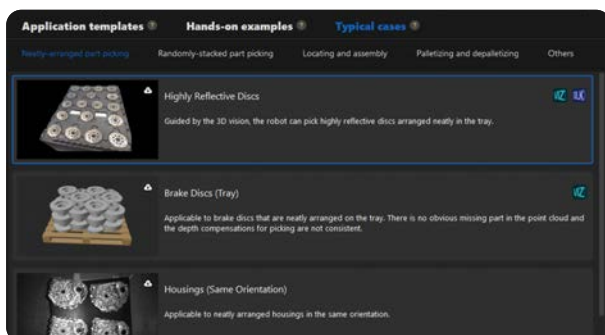
Application templates

Allow you to choose from templates for common application scenarios and set up and configure your project deployment with ease and efficiency.



Hands-on examples

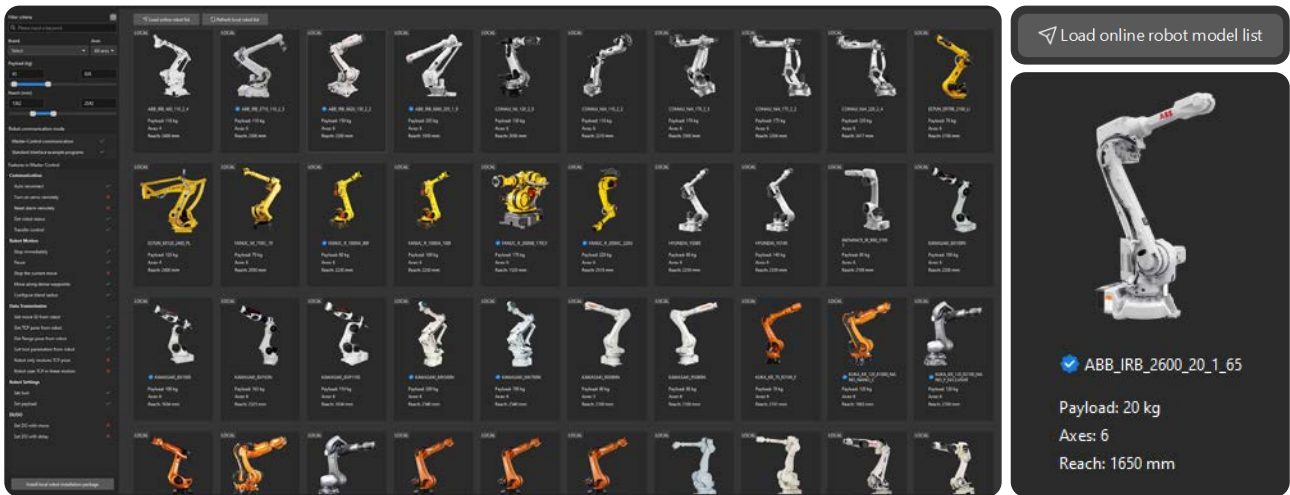
Allow you to choose right procedures and workflow fragments based on your on-site requirements.



Typical cases

Allow you to refer to typical real-world cases and run these template cases with one click.

Easy Robot Communication Empowers Your Project



1,000+ robot models

Browse the world's largest robot model library and effortlessly optimize your robot's path.

1-2 days

Communication integration can be completed in as little as 1 day.

Easy integration

Manage communication integration – easily and without technical support.

3D VISION & AI FOR ROBOTS AND MORE



Get the most from Mech-Mind's 3D vision - get in touch with us!

Website: www.mech-mind.com
E-mail (business): info@mech-mind.net
E-mail (PR & marketing): marketing@mech-mind.net

Learning guidance to deploy your vision application **STEP BY STEP**, please visit

Documentation: docs.mech-mind.net
Online community: community.mech-mind.com