

# Mech-Eye PRO XS

## Palm-sized Industrial 3D Camera

- Ultra-high accuracy
- Fast acquisition
- High stability
- High flexibility
- Industrial grade
- Easy integration



### Specification

Recommended Working Distance: 300-600 mm

Near FOV: 220 × 160 mm @ 0.3 m

Far FOV: 430 × 320 mm @ 0.6 m

Resolution: 1280 × 1024

Megapixels: 1.3 MP

Communication Interface: Gigabit Ethernet

IP Rating: IP65

Point Z-value Repeatability ( $\sigma$ )<sup>[1]</sup>: 0.1 mm @ 0.5 m

Measurement Accuracy (VDI/VDE)<sup>[2]</sup>: 0.1 mm @ 0.5 m

Image Sensor: Other high-performance CMOS for high-end machine vision

Operating Temperature: 0-45°C

Typical Capture Time: 0.7-1.1 s

Baseline: Approx. 93 mm

Dimensions: Approx. 160 × 52 × 87 mm

Weight: Approx. 0.8 kg

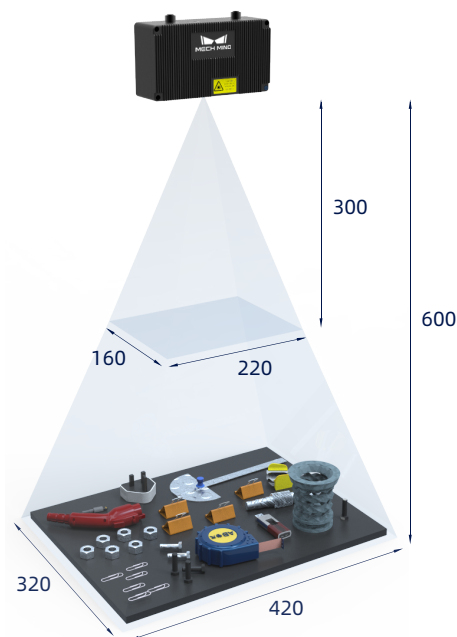
Input: 24 V DC, 1.5 A

Safety and EMC: CE/FCC/VCCI

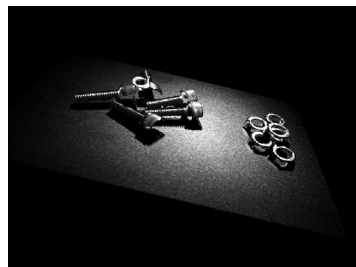
Cooling: Passive

Light Source: Blue LED (459 nm, RG2)

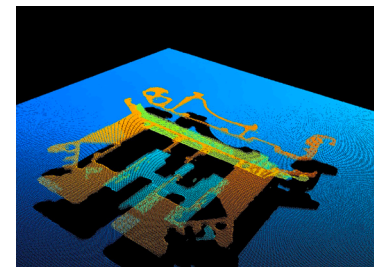
### Field of View (mm)



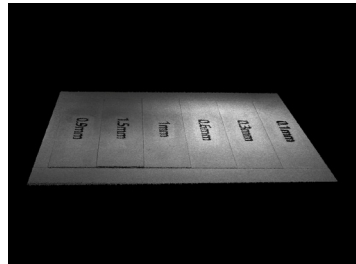
### Point Clouds



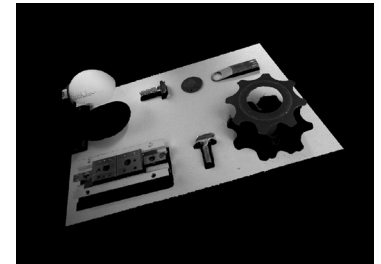
Screws & Nuts



Cards



Stairs with a height difference of 0.1 mm on Z-axis



Considerably reflective / dark workpieces

[1] One standard deviation of 100 Z-value measurements of the same point. The measurement target was a ceramic plate.

[2] According to VDI/VDE 2634 Part II.