

# Mech-Eye PRO XS

## Palm-sized Industrial 3D Camera

- Ultra-high accuracy
- Fast acquisition
- High stability
- High flexibility
- Industrial grade
- Easy integration

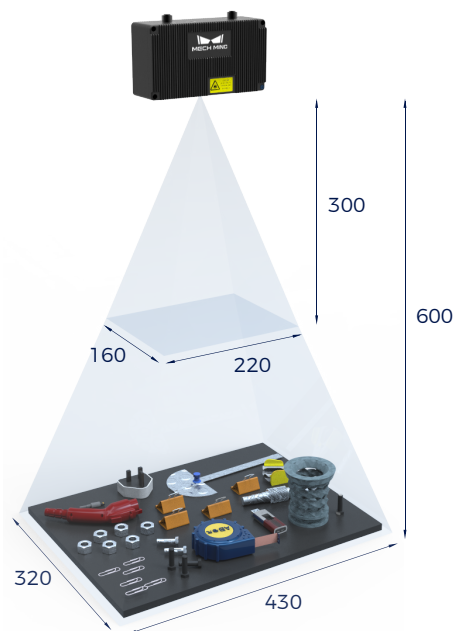


### Specifications

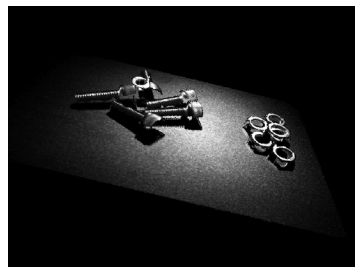
Recommended Working Distance: 300-600 mm  
 Near FOV: 220 × 160 mm @ 0.3 m  
 Far FOV: 430 × 320 mm @ 0.6 m  
 Resolution: 1440 × 1080  
 Megapixels: 1.6 MP  
 Communication Interface: Gigabit Ethernet  
 IP Rating: IP65  
 Point Z-value Repeatability ( $\sigma$ )<sup>[1]</sup>: 0.1 mm @ 0.5 m  
 Measurement Accuracy (VDI/VDE)<sup>[2]</sup>: 0.1 mm @ 0.5 m  
 Image Sensor: Sony CMOS for high-end machine vision

Operating Temperature: 0-45°C  
 Typical Capture Time: 0.7-1.1 s  
 Baseline: 93 mm  
 Dimensions: 160 × 52 × 87 mm  
 Weight: 0.8 kg  
 Input: 24 V DC, 1.5 A  
 Safety and EMC: CE/FCC/VCCI/KC/ISED/NRTL  
 Cooling: Passive  
 Light Source: Blue LED (459 nm, RG2)

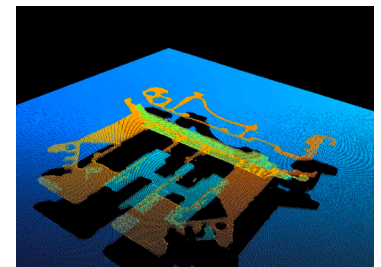
### Field of View (mm)



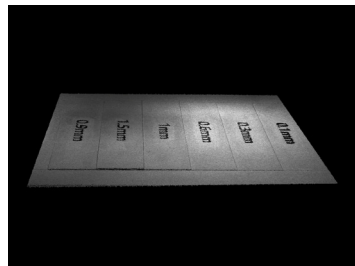
### Point Clouds



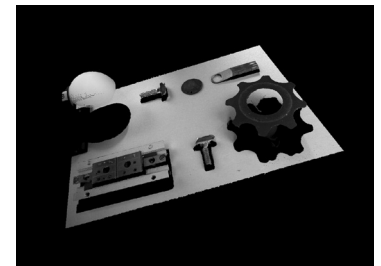
Screws & Nuts



Cards



Stairs with a height difference of 0.1mm on Z-axis



Considerably reflective / dark workpieces

[1] One standard deviation of 100 Z-value measurements of the same point. The measurement target was a ceramic plate.

[2] According to VDI/VDE 2634 Part II.